

Works Cleanliness
Remove any soil and arisings from adjacent hard surfaces and leave works in a clean, tidy fashion at completion.

Watering
Water all plants immediately after planting, thoroughly and without damaging or displacing plants or soil.

Notes
All soft landscape works to be carried out in accordance with BS4428:1989 Code of Practice for General Landscape Operations.

All new tree planting shall comply with BS4043:1989 Transplanting root-balled trees and BS3936:1992 Nursery Stock Part 1. Specification for Trees and Shrubs.

Follow good modern horticultural practice in any proposed soft landscaping

Based on Corporate Architecture Proposed Site Plan 3973/AG/16/008.

PLANT SCHEDULE

SPECIES	Offn	Height	Root	Pos Size	Notes	Breaks	Qty
TREES							
Acer campestre	14-16cm	4.0-4.5m	br	BHSD			4
Amelanchier 'Robin Hill'	12-14cm	3.5-4.0m	br	HSD			2
Crataegus monogyna	12-14cm	3.5-4.0m	br	HSD			4
Prunus 'Sunset Boulevard'	12-14cm	3.5-4.0m	br	HSD			4
Sorbus 'Cardinal Royal'	12-14cm	3.5-4.0m	br	HSD			4
THREE LITRE SHRUBS							
Coronilla 'Bevans Variety'	CG	3L					26
Escalonia 'Coral Beauty'	CG	3L					67
Escalonia 'Donard Seeding'	CG	3L					22
Escalonia 'Edinensis'	CG	3L					56
Hebe 'Anna'	CG	3L					15
Hebe 'rakaiensis'	CG	3L					29
Hebe 'Silver Queen'	CG	3L					36
Hebe 'Wili Charm'	CG	3L					29
Hypericum x mosenianum	CG	3L					98
Lonicera 'Maygreen'	CG	3L					30
Prunus 'Otto Luyken'	CG	3L					30
Pyracantha 'Teton'	CG	3L					23
Viburnum 'Spring Bouquet'	CG	3L					26
HERBACEOUS PLANTS							
Coronilla 'Bevans Variety'	CG	3L					9
HEDGES							
Buxus sempervirens	CG	3L					43

Proposed Native Hedgerow
To be planted at 5 plants per linear metre in double staggered row. All with spiral rabbit guards and secured with bamboo cane. Plant at 750mm from fence boundary.

Areas for planting shall be treated with a translocated herbicide such as Glyphosate to clear any existing weeds before planting, the ground shall be cultivated to a depth of 300mm. Whips shall be pit planted, with backfill mixed with 70grams of Enmag slow release fertiliser. All stock delivered to site shall be of proven British provenance, a certificate shall be provided to the Landscape Architect to prove provenance of plants prior to delivery to site. Dip all roots into MycorForce Whip Dip prior to planting.

Mix	Native Hedge	NH1	Size	Tits
10%	Acer campestre	15	1+1 80-100 br transplant	15
10%	Coronilla avelana	15	1+1 80-100 br transplant	15
50%	Crataegus monogyna	75	1+1 80-100 br transplant	75
10%	Ilex aquifolium	15	60-90 3L container	15
15%	Prunus spinosa	23	1+1 80-100 br transplant	23
5%	Rosa canina	8	1+1 40-60 br transplant	8

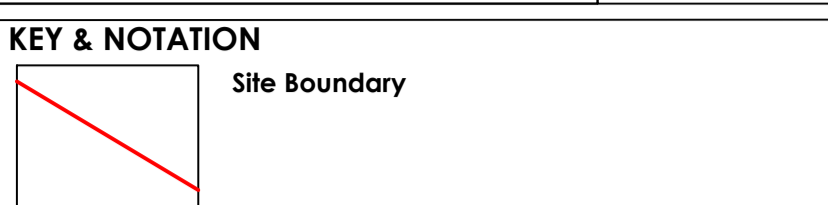


Grass Turf
Lay turf with minimum delay after lifting, within 18 hours during spring and summer and 24 hours autumn and winter. If required stack in piles no higher than 1m.

Lay turf with minimum delay after lifting, within 18 hours during spring and summer and 24 hours autumn and winter. Do not lay turf during persistent cold weather or drying winds or if soil is frost bound, waterlogged or excessively dry. Prepare topsoil to BS3882:2015, topsoil shall be dry and workable, reduce to a true, even surface, friable and lightly firmed but not over compacted fine fill to a depth of 25mm. Remove surface stones and clods exceeding 15mm. Where required extend cultivation into existing adjacent grass areas sufficient to allow mowing in of levels. Ensure contours are free and flowing with falls for adequate drainage. Lay turf with broken joints, well butted up. Do not stretch turf. Edges shall be laid to whole turfs and trimmed to true line. Lightly and evenly firm as laying proceeds to ensure full contact with substrate. Do not use rollers. Dress with horticultural sand and completely fill all joints. Lay planks over previously laid turf, do not walk on prepared beds of newly laid turf.

Tree and Shrub Planting General
Prior to planting topsoil shall be moist, friable and not waterlogged. Carry out planting during suitable weather conditions, do not plant during frozen or windy conditions. Where beds are overgrown with weeds apply herbicide in accordance with manufacturers recommendation. Allow fallow period before cultivation. Container grown plants can be planted at any time of year if ground and weather conditions are favourable. Bare root trees and shrubs can be planted from late October to March. All plants shall be as specified, undamaged, sturdy, healthy and vigorous. They shall be free from pests, diseases, discoloration and physiological disorders. Name, form, dimensions, provenance and other criteria shall be as defined in The National Plant Specification. All plant handling shall be in accordance with HTA 'Handling and Establishing Landscape Plants'. All plants shall be stored in a secure environment and protected from site operations and over exposure to adverse weather conditions. Where topsoil is compacted it shall be broken up to a depth of no less than 350mm into particles of 2-8mm, with the surface left regular and even. Levels shall be 25mm above kerbs and hardstandings and 50mm above adjacent grass areas. Remove all visible weeds, roots and large stones exceeding 30mm. Do not cultivate soil within rootspread of existing trees and shrubs. All plants shall be planted upright or well balanced with best side to front. MycorForce Transplanter shall be spread around the roots of each plant during planting at a rate specified by the supplier.

Topsoil and Subsoil
Do not use subsoil contaminated with bricks, concrete, hardcore, rubbish or other materials that are corrosive, explosive or flammable, hazardous to human or animal life and are detrimental to plant life. Subsoil shall be excavated and or placed to required profiles and levels. When ground conditions are reasonably dry, subsoils shall be loosened to a depth of 300mm and all stones larger than 50mm shall be removed. Where existing topsoil on site is deficient and requires topping up, all imported topsoil shall be in accordance with BS3882:2015 and with NHBC requirements. Do not use topsoil contaminated with subsoil, rubbish or other materials that are corrosive, explosive or flammable, hazardous to human or animal life and are detrimental to plant life. Topsoil shall be stored in heaps no higher than 1m and wider than 2m and shall be protected from contamination and compaction. Following spreading, topsoil areas shall be cultivated to suitable depth and flit when weather is suitably dry and the surface shall be left regular and even, levels shall be 25mm above adjacent kerbs and 50mm above lawns. Any visible weeds, roots and large stones shall be removed. Do not compact topsoil and ensure a friable texture of separate visible crumbs. Recommended depth after settlement: Grass Areas: 100mm Shrub Areas: 300 to 450mm



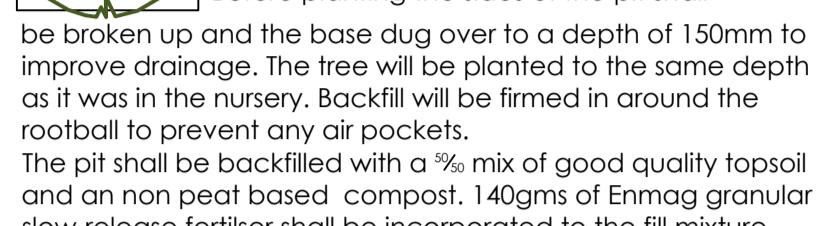
KEY & NOTATION

Site Boundary

Proposed Tree Planting (General)
The excavated hole shall be of sufficient size to accommodate the root-ball or container, allowing approximately 500mm clearance. Before planting the sides of the pit shall be broken up and the base dug over to a depth of 150mm to improve drainage. The tree will be planted to the same depth as it was in the nursery. Backfill will be firmed in around the rootball to prevent any air pockets. The pit shall be backfilled with a 2% mix of good quality topsoil and an on peat based compost. 140gms of Enmag granular slow-release fertiliser shall be incorporated to the fill mixture.

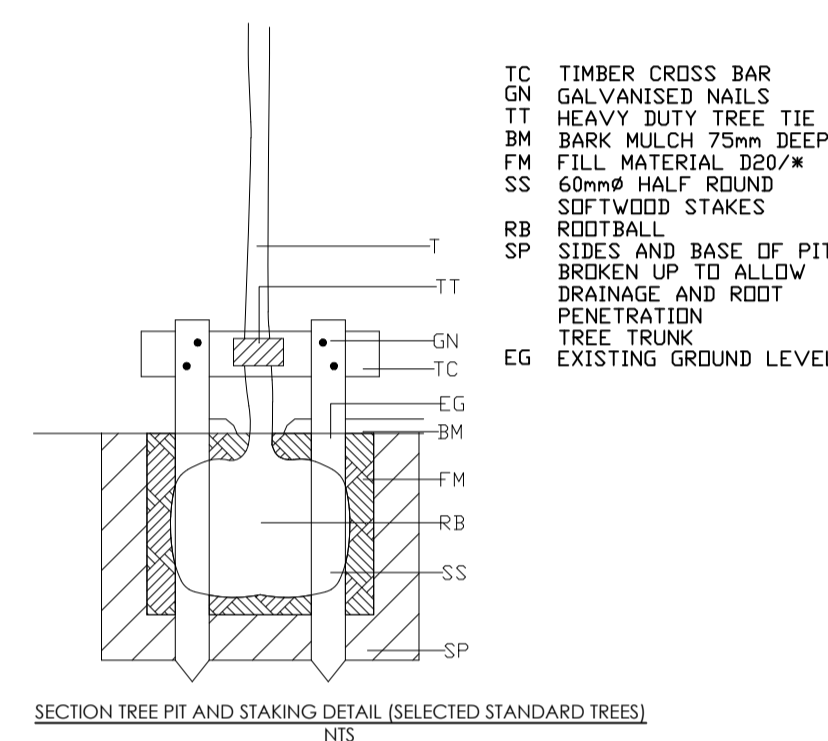
Root Barriers
Where an installed rootball is within 3m of an existing underground service route install protective root barrier with sides vertical and finished 75mm below finished ground level. To be Greenleaf ReRoot 2000 or similar approved.

Trees in soft ground
Trees shall be double staked and fixed to horizontal crossbar using rubber strapping, with rubber block positioned between the tree and cross bar. Stakes shall be 60mm diameter treated softwood, driven firmly into ground either side, and not through the rootball, with tree central between the stakes. The above ground height of the stake should be a minimum of a third of the stem high. All trees to receive perforated watering pipes surrounding root ball.



SECTION TREE PIT AND STAKING DETAIL (SELECTED STANDARD TREES)

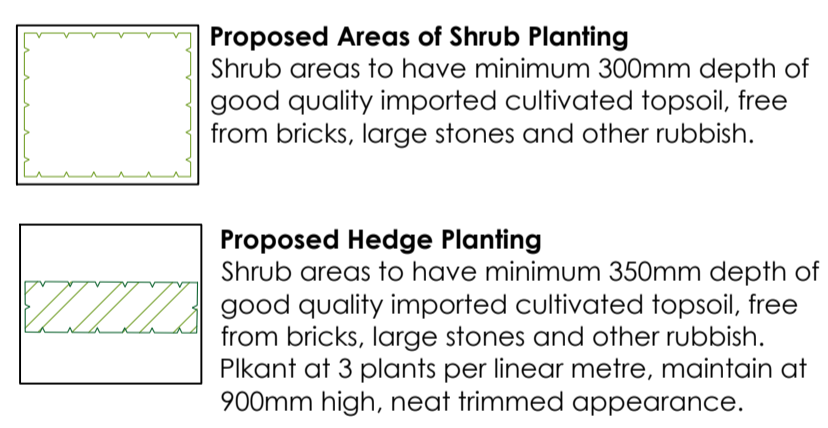
TC TIMBER CROSS BAR
GN GALVANISED NAILS
TT HEAVY DUTY TREE TIE
BM BARK MULCH 75mm DEEP
FF FILL MATERIAL D20+
SS 60mm HALF ROUND
SBT SOFTWOOD STAKES
RB RDBTBALL
SP SIDES AND BASE OF PIT
BRK BRKEN UP TO ALLOW
DRAINAGE AND RDBT
PENETRATION
TR TREE TRUNK
EG EXISTING GROUND LEVEL



Tree Aftercare
Any necessary formative pruning will be carried out and where appropriate woodchip/bark mulch applied to a depth of 75mm, and to at least the edge of the planting pit. A properly planned maintenance programme should be kept up until successful establishment of the trees. This may include watering when necessary, checking of the support systems, weed control and further mulching.

Proposed Areas of Shrub Planting
Shrub areas to have minimum 300mm depth of good quality imported cultivated topsoil, free from bricks, large stones and other rubbish.

Proposed Hedge Planting
Shrub areas to have minimum 350mm depth of good quality imported cultivated topsoil, free from bricks, large stones and other rubbish. Plank at 3 plants per linear metre, maintain at 900mm high, neat trimmed appearance.



Scale: 1:200 @ A1

Revisions	Dwn.	Date

Project
Proposed Residential Development,
Harbury Road, Burton on Trent

Drawing
Landscape Proposals

Status
For Planning, Tender & Construction

Date
09.12.2019

Drawn
cjn

Dwg. No.
19.1478.001

Revision
Checked
cjn